

TECHNICAL SPECIFICATION SHEET

ZBBF19SS

A - Securely fasten the short screw end of the 2 fixing bolts (1) onto both ends of the Tubular Handle fixing points.

B - Slide the solid bushes (with the round hole) (2) over the fixing bolts. Bushes should be the same diameter as the tubular handle or tubular legs of T pull handle.

C - Slide one plastic washer (3) over each of the fixing bolts, essential when fitting to glass doors (optional when fitting to timber doors).

D - Slide the plastic sleeve (4) over both fixing bolts. These are essential when fitting to glass doors, not required for timber doors.

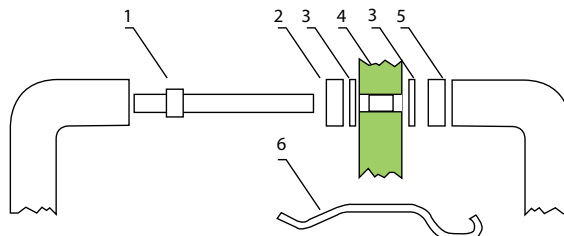
E - Insert the assemblies through the prepared holes in the door, (as shown in the pull handle instructions). As the fitting on this side cannot be removed, fit to the external side of the door if required.

F - If the projection of the bolt from the face of the door is more than 30mm, it may be necessary to shorten the bolts.

G - Slide on the plastic washer (3), essential when fitting to glass doors, optional for timber doors.

H - Insert the top projecting screw into the tubular handle and using the tool (6) insert into the small hole in the bush (5), turn until the bolt is engaged into the pull handle. Repeat for bottom fixing.

I - Continue to secure the pull handle to the door face by tightening the bush (5) progressively top and bottom until the pull handles are securely fastened to the door.



For use on timber & glass doors, from 12mm to 55mm.

CODE	DESCRIPTION	FINISH	PROFILE
ZBBF19SS	Back to Back Fixing Kit - 19mm dia.	SSS	19mm diameter pull handles.
<div><p>For more information please call: 01228 672900 or Fax: 01228 672928 or Email: sales@zoo-hardware.co.uk www.zoohardware.co.uk ZOO Hardware Ltd, Unit H, Dukes Drive Kingmoor Park North, Carlisle, Cumbria CA6 4SH</p></div>			